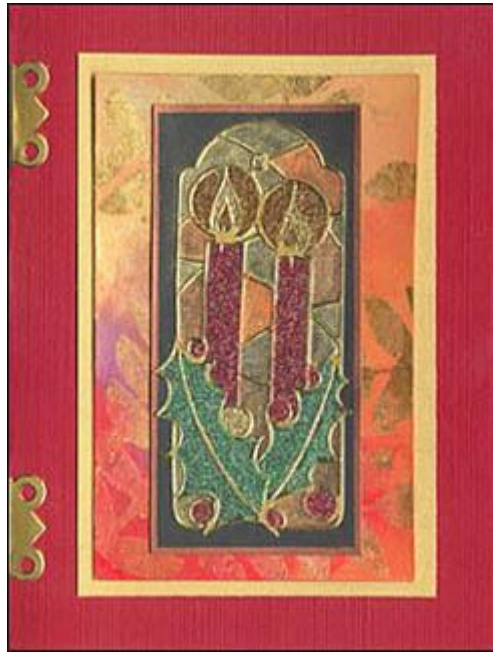


Cardmaking – Styl'ines and Mica D'Lights – Candlelit Christmas

by Susan Pickering Rothamel



Materials

- [MicaColor](#) - Watercolor Palettes®
- [Styl'ines®](#) - Hinges, Christmas I
- [Mica D'Lights®](#) - Jade, Ruby & Gold
- [Perfect Paper Adhesive® - Gloss](#)
- [Gildenglitz®](#)
- [Texture Sponge](#)
- [Duo Embellishing Adhesive®](#)
- [Great Tape®](#)
- [Krylon Leafing Pen](#)
- [Folia Card Stock](#)
- [Paint Brush](#)

Directions

1. Paint in [Styl'ines®](#) outline sticker using a detail brush and the [MicaColor](#) watercolor. Let dry.
2. Adhere [Mica D'Lights®](#) to selected areas of the [Styl'ines®](#) by sprinkling them into [Perfect Paper Adhesive® - Gloss](#) while still wet.
3. Create a background paper by stamping with [Duo Embellishing Adhesive®](#). Let dry. Apply [Gildenglitz®](#) and burnish with a [Texture Sponge](#).
4. Paint a wash of [MicaColor](#) watercolor over the entire paper. Let dry.
5. Assemble all layers with [Great Tape®](#). Add [Styl'ines®](#) hinges to the card for further embellishing.