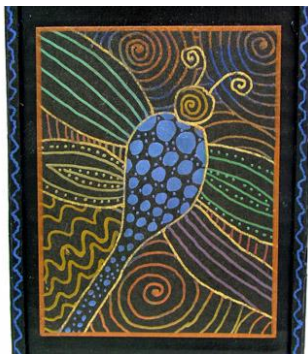


## Fine Liner Clock

by: Julie Davenport



### Materials

- [Fine Liner® Calligraphy Pen](#)
- [Duo ® Adhesive](#)
- [Jewelz® - Sparkling Mica Pigments](#)
- [Perfect Paper Adhesive® - Matte](#)
- [Krylon Pen- Copper](#)
- [Folia Cardstock](#)
- Cardboard
- [Perfect Pigment® - Colors of choice](#)
- [Great Tape®](#)
- [Paintbrush - Detail](#)
- Clock Parts

### Directions

1. Fill [Fine Liner® Calligraphy Pen](#) with [Duo ® Adhesive](#)
2. Draw with the [Duo ® Adhesive](#), making different patterns onto different pieces of cardstock. Let the [Duo ® Adhesive](#) dry.
3. Apply the mica pigments to tacky areas using a [Paintbrush - Detail](#). Remove excess using a soft brush. Outline cards in [Krylon Pen- Copper](#)
4. Create and cut a clock pattern. Assemble the various cardboard clock pieces using [Perfect Paper Adhesive® - Matte](#). (Our clock was painted with [Perfect Pigment® - Colors of choice](#). We used Carbon Black )
5. Attach the various drawn art cards using [Great Tape®](#).. Draw on the roof of the clock using the [Fine Liner® Calligraphy Pen](#) and [Duo ® Adhesive](#). Let dry and apply the [Jewelz® - Sparkling Mica Pigments](#).
6. Edge the side of the clock using a [Krylon Pen- Copper](#).
7. Punch a hole in the center of the clock face and attach the clock parts according to the directions on the package.

### TIPS

- To fill a [Fine Liner® Calligraphy Pen](#) slowly drizzle the liquid into the well. This prevents air bubbles. Air bubbles prevent the pen from flowing. Gently tap pen onto cardstock to start pen flowing.
- Wash the [Fine Liner® Calligraphy Pen](#) thoroughly with clear water. Rinse & tap it out 3 times. Dry & blow into the pen to remove any excess water or adhesive. Recap and restore the pen in the tube provided.